

WORK & Power

$$W = F \cdot d$$

Work is calculated as Force multiplied by Distance.

WORK: Energy transformed by force

Energy: ability to do work.

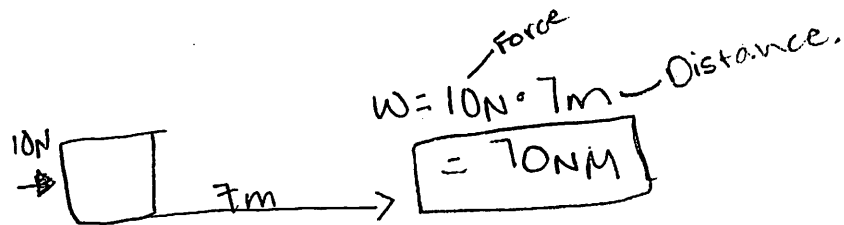
Power

$$P = \frac{W}{t}$$

Power is calculated as Work divided by time.

Power is measured in w (watts)
 t (time) is measured in s (seconds)
 W (work) is measured in j (joules)

Work example.

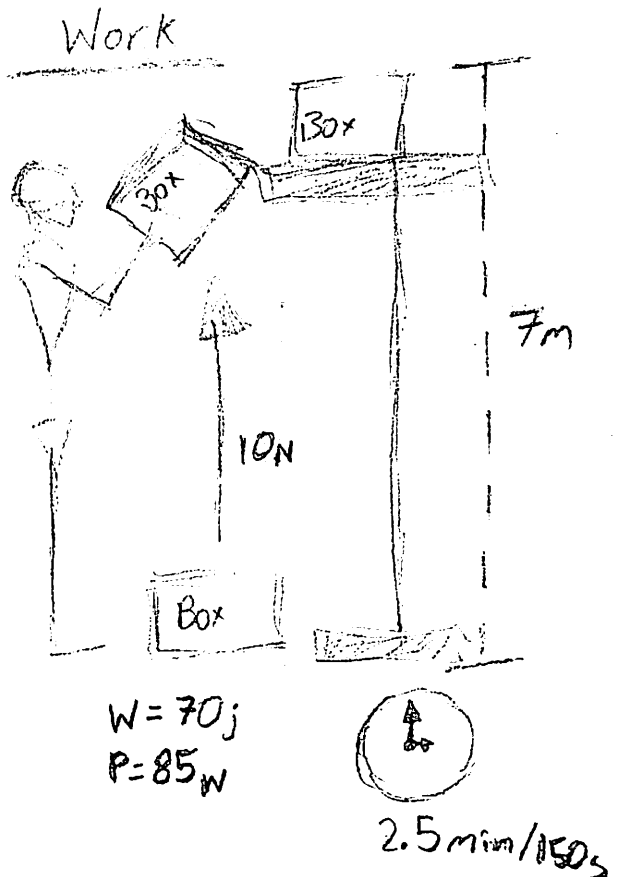


Power example:

$$85w = \frac{W}{2.5min}$$

$$85w = \frac{W}{150s}$$

$$12750j = W$$



Miranda
Dove

Lizeth Diaz

(1) ...
(2) ...
(3) ...

...
...
...
...